

Product name	double cross back metal restaurant dining chair with choice of seat from PVC and wood seating ManufacturerManufacturer
Model NO	T159
Finish	Powder coating or heat transfer printing
Sample	Acceptable





Quality Control



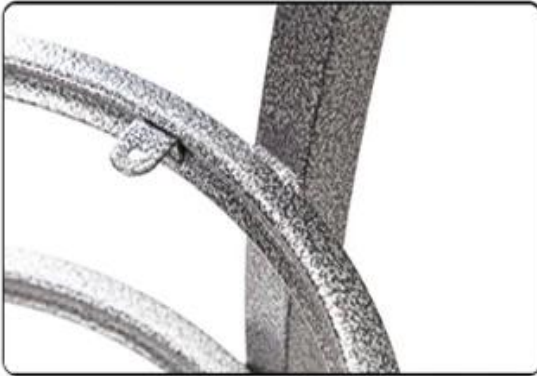
PVC/Fabrics Seat Abrasion Resistance Test Report



Result : >30000 cycles



Detail Image



Color Chart

PVC COLOR



G-5/Burgundy



G-4/Forest Green



G-1/Black



G-2/Fire Red



G-3/Wine



G-9/Dark Blue



G-7/Camel



G-8/Cream



G-10/Green



G-6/Dark Brown

FABRIC COLOR



S08-08



S08-09



S08-10



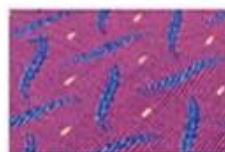
S08-12



S08-13



S08-33



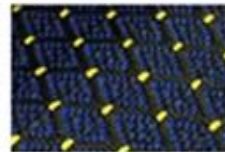
S08-37



S08-39



S76



S78

TUBE COLOR



S123/Golden 2



S124/Golden



S268/Matt Grey



S198/Silver 18



S244/Black Wrinkle



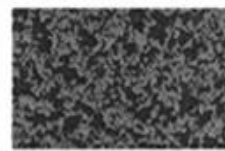
S260/Red Copper



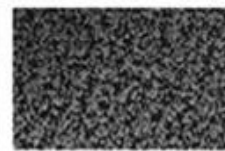
S144/Grey



S243/Sandy Black



S251/Silver 4



S253/Silver 8

Hot Sale Products



Item No: T 155



Item No: T 159



Item No: T 157



Item No: T 147



Item No: T 122



Item No: T 156

Packing & Shipping



PE Film Packing



Loading



Shipping